

CABLE CONNECTORS

- Aluminum or Copper material
- AAC, ACSR, ACAR, Ropelay, Copper & Metric Cables
- Pre-drilled inspection/weep hole
- Split, EHV and tin-plated versions available
- Custom angles, pads and barrel spacing
- Single Swage installation
- Instant inspection with Go/No-Go Gauge
- No bird caging or bent connectors

STATE OF THE ART SWAGE TECHNOLOGY

Substation customers around the world trust DMC Power's patented Swage system on their most critical Transmission and Distribution connections.

Once you experience the peace of mind that our superior connection provides and the all-weather, time saving capabilities of our cutting edge design, you'll never go back to your old way of installing electrical cable connections again.

Cable Swage System Advantages:

• SAVE TIME

Lightweight tool uses just one 360° compression instead of multiple crimps.

• COMPLETE 360° CONTACT

Swaging creates a virtually void free connection and maximizes conductivity by compressing the interior of the fitting around the exterior of the cable.

• FINISHED PADS

Both sides of the extruded aluminum pad can be used equally as a connection surface.

• TIN PLATING

Available on all connectors for use with dissimilar metals and to deter copper theft.

• SIMPLE ONE-STEP INSPECTION

Easily inspect your Swage in seconds with the handheld "Go/No-Go" Inspection Gauge.

• CUSTOM SOLUTIONS AVAILABLE

A wide range of cable configurations and connector types (including Ropelay Cable, metric sizes, copper and EHV rated parts) are available for any type of job.

For those times you need a quick or custom solution, DMC Power is here to help. Our in-house engineering, R&D, manufacturing and testing teams will develop and deliver exactly what you need faster than anyone else.



Our connectors are available in a variety of configurations and sizes to handle any cable job



The lightweight Swage Tool connects cables in even the most hard to reach places

DMC Power's cable connectors are qualified to meet or exceed nationally recognized standards and tests

Cable Connector Qualifications

ANSI C119.4	Tensile: 30%-53% (Min/Max) of conductor strength; 5% required for Class 3 connectors Current Cycle: 500 cycles (class A); met all thermal & resistance requirements Pre-existing Cable: After tapping into run, Swaged cable retained 90% of rated strength
ASTM B117	Salt Fog: 1,000 hours passed
NEMA CC1	RIV/Corona: Up to 500 kV with factor of safety on applicable fittings Temp Rise & Resistance: Runs cooler than cable at 100%, 125% & 150% of ratings requirements
Customer Requirements	Short Circuit Tests: Pass 3 second short-time & 15 cycle peak withstand tests

CPLK9100**1-HOLE CENTER FORMED
PAD TERMINAL**

Up to 230kV	Pads 2"	2" OD Weight ~3 lbs
Cu CCL9100	ANGLES	

**ORDERING EXAMPLE****CPLK9100D00040**4/0 Oxlip AAC Barrel to 1", 1-Hole
Center Formed Pad; Aluminum**CPLK9200****2-HOLE CENTER FORMED
PAD TERMINAL**

Up to 230kV	Pads 2"	2" OD Weight ~3 lbs
Cu CCL9200	ANGLES	

**ORDERING EXAMPLE****CPLK9200D07000**700 Flag AAC Barrel to 2", 2-Hole
Center Formed Pad; Aluminum**CPLK9202****2-HOLE OFFSET
PAD TERMINAL**

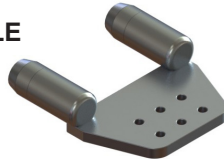
Up to 230kV	Pads 2"	2" OD Weight ~3 lbs
Cu CCL9202	ANGLES	

**ORDERING EXAMPLE****CPLK9202D15105**1351.5 Martin ACSR Barrel to 2",
2-Hole Offset Pad; Aluminum**CPLK9209****2-HOLE 90°
PAD TERMINAL**

Up to 230kV	Pads 2"	2" OD Weight ~3 lbs
Cu CCL9209	ANGLES	

**ORDERING EXAMPLE****CPLK9209D03975**336.4 Linnet ACSR Barrel to 2",
2-Hole 90° Pad; Aluminum**CPLK9662****DUAL BARRELS TO 6-HOLE
OFFSET PAD TERMINAL**

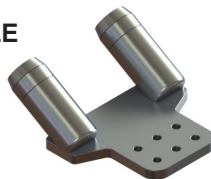
Up to 345kV	Pads 5"/6"	2" OD Weight ~7 lbs
Cu CCL9662	5" CPLK9652	ANGLES

**ORDERING EXAMPLE****CPLK9662D20000**Dual 2000 Cowslip AAC Barrels to
6", 6-Hole Offset Pad; Aluminum**CPLK9664****DUAL BARRELS TO 6-HOLE
45° PAD TERMINAL**

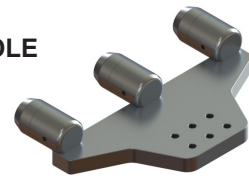
Up to 345kV	Pads 5"/6"	2" OD Weight ~7 lbs
Cu CCL9664	5" CPLK9654	ANGLES


**ORDERING EXAMPLE****CPLK9664D22500**Dual 2156 Bluebird ACSR Barrels to
6", 6-Hole 45° Pad; Aluminum**CPLK9663****DUAL BARRELS TO 6-HOLE
30° PAD TERMINAL**

Up to 345kV	Pads 5"/6"	2" OD Weight ~7 lbs
Cu CCL9663	5" CPLK9653	ANGLES

**ORDERING EXAMPLE****CPLK9663D17500**Dual 1750 Jessamine AAC Barrels to
6", 6-Hole 30° Pad; Aluminum**CPLK9672****TRIPLE BARRELS TO 6-HOLE
OFFSET PAD TERMINAL**

Up to 345kV	Pads 5"/6"	2" OD Weight ~10 lbs
Cu CCL9672	ANGLES	

**ORDERING EXAMPLE****CPLK9672D15900**Three 1590 Coreopsis AAC Barrels
to 6", 6-Hole Offset Pad; Aluminum**CUSTOM PAD WIDTHS**

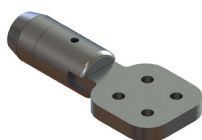
Many of our connectors have alternative part numbers for different standard pad widths. Look for this icon  underneath the item to see the alternative pad size and standard part number. Of course ANY custom pad configuration can be designed, so if you don't see it just ask!



CPLK94404-HOLE CENTER FORMED
PAD TERMINALUp to
230kV
Pads
3"/4"
2" OD Weight
~5 lbs

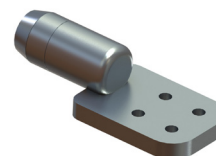
Cu CCL9440 3" CPLK9430 ANGLES CEHV9440

ORDERING EXAMPLE

CPLK9440D000202/0 Aster ACC Barrel to 4", 4-Hole
Center Formed Pad; Aluminum**CPLK9442**4-HOLE OFFSET
PAD TERMINALUp to
345kV
Pads
3"/4"
2" OD Weight
~5 lbs

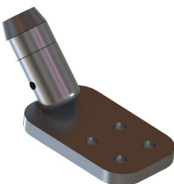
Cu CCL9442 3" CPLK9432 ANGLES CEHV9442

ORDERING EXAMPLE

CPLK9442D135151272 Bittern ACSR Barrel to 4",
4-Hole Offset Pad; Aluminum**CPLK9444**4-HOLE 45° PAD
TERMINALUp to
345kV
Pads
3"/4"
2" OD Weight
~5 lbs

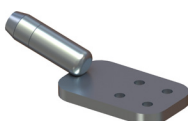
Cu CCL9444 3" CPLK9434 ANGLES CEHV9444

ORDERING EXAMPLE

CPLK9444D07500750 Cattail AAC Barrel to 4",
4-Hole 45° Pad; Aluminum**CPLK9449**4-HOLE 90° PAD
TERMINALUp to
230kV
Pads
3"/4"
2" OD Weight
~5 lbs

Cu CCL9449 3" CPLK9439 ANGLES CEHV9449

ORDERING EXAMPLE

CPLK9449D225002167 Kiwi ACSR Barrel to 4",
4-Hole 90° Pad; Aluminum**ALSO AVAILABLE:**Copper, EHV, custom pads, angles and other configurations available. Visit the product page on DMCPower.com for details.**CPLK9445**4-HOLE 15° PAD
TERMINAL**CPLK9987**LONG BARREL TO 4-HOLE
45° PAD TERMINAL**CPLK9945**DUAL BARRELS TO 4-HOLE
15° OFFSET PAD TERMINAL**CPLK9984**EXTENDED 4-HOLE
90° PAD TERMINAL**SUPERIOR
DESIGN**

DMC Connector (center)

**ITS ALL ABOUT THE PADS**

DMC Power manufactures our pads from extruded aluminum to meet and exceed NEMA Pad standards. What makes ours different?

- *Machined for perfect flatness*
- *Smooth surface finish = greater amount of contact points*
- *Thicker, oversized factor of safety*
- *Runs cooler*
- *Increased ampacity*
- *Greater resistance to fatigue*
- *Custom sizes, hole placement, barrel angles and mounting positions*
- *NEMA Pad EHV Bolt Shields (PLK8000) also available*

CPLK9642

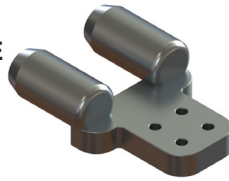
DUAL BARRELS TO 4-HOLE
OFFSET PAD TERMINAL

Up to
345kV

Pads
3"/4"

2" OD Weight
~ 6 lbs

Cu CCL9642 3" CPLK9632 ANGLES CEHV9642



ORDERING EXAMPLE

CPLK9642D12720

Dual 1192.5 Bunting ACSR Barrels
to 4", 4-Hole Offset Pad; Aluminum

CPLK9644

DUAL BARRELS TO 4-HOLE
45° PAD TERMINAL

Up to
345kV

Pads
3"/4"

2" OD Weight
~ 6 lbs

Cu CCL9644 3" CPLK9634 ANGLES CEHV9644



ORDERING EXAMPLE

CPLK9644D11130

Dual 1113 Marigold AAC Barrels
to 4", 4-Hole 45° Pad; Aluminum

CPLK9649

DUAL BARRELS TO 4-HOLE
90° PAD TERMINAL

Up to
230kV

Pads
3"/4"

2" OD Weight
~ 6 lbs

Cu CCL9649 3" CPLK9639 ANGLES CEHV9649



ORDERING EXAMPLE

CPLK9649D22500

Dual 2156 Bluebird ACSR Barrels
to 4", 4-Hole 90° Pad; Aluminum

CPLK9982

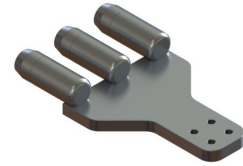
TRIPLE BARRELS TO 4-HOLE
OFFSET PAD TERMINAL

Up to
345kV

Pads
4"/6"

2" OD Weight
~ 9 lbs

Cu CCL9982 6" CPLK9672 ANGLES



ORDERING EXAMPLE

CPLK9982D13515

Three 1351.5 Columbine AAC Barrels
to 4", 4-Hole Offset Pad; Aluminum

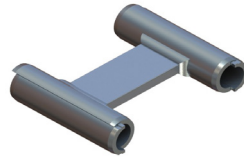
CL702

PARALLEL CABLE
SPACER

Up to
500kV

2" OD Weight
~3 lbs

Cu CCL702 SPLIT EHV



ORDERING EXAMPLE

CL702D09540-8

Dual 954 Magnolia AAC Cables Spaced 8"; Aluminum

Cable Run Size
Spacing Inches

CL714

PARALLEL CABLE SPACER TO
TRANSVERSE 4-HOLE PAD

Up to
500kV

Pads
3"/4"

2" OD Weight
~ 5 lbs

Cu CCL714 3" CL713 SPLIT EHV



ORDERING EXAMPLE

CL714D22500-18

Dual 2167 Kiwi ACSR Cables Spaced 18"
with 4", 4-Hole Transverse Pad; Aluminum

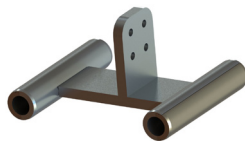
Cable Run Size
Spacing Inches



ALSO AVAILABLE:

CL715

CABLE SPACER TO
LONGITUDINAL PAD




CL773

TRIFURCATING
CABLE SPACER



COPPER CABLE CONNECTORS

All DMC Power cable connectors can be manufactured out of pure copper, with the exact same specifications and standards that meet or exceed our Aluminum ratings. This is the perfect solution when using copper conductors in coastal/high corrosive areas or to achieve higher ampacity. Look for this icon  CCL### underneath the main item for the copper cable base part number and use the chart at the bottom of page 30 to find the connector identifier number used to complete the fitting.

APPLICATION NOTES



CL720 CABLE SPLICE

Up to
500kV

2" OD Weight
~1 lb

Cu CCL720 EHV



ORDERING EXAMPLE

CL720D03975

397.5 Canna AAC Cable Splice; Aluminum

CL731 SPLIT RUN TAP

Up to
500kV

2" OD Weight
~2 lbs

Cu CCL731 SPLIT ANGLES EHV



ORDERING EXAMPLE

CL731D07950-00040

795 Lilac AAC Cable Run to 4/0 Oxlip AAC Cable Tap; Aluminum

Cable Run Size
Cable Tap Size

CPLK9584 SPLIT RUN TO 4-HOLE TRANSVERSE PAD TEE

Up to
500kV

Pads
3" 7/4"

2" OD Weight
~5 lbs

Cu CCL9584 3" CPLK9583 SPLIT EHV



ORDERING EXAMPLE

CPLK9584D02668

266.8 Waxwing ACSR Split Run to 4", 4-Hole Transverse Pad Tee; Aluminum

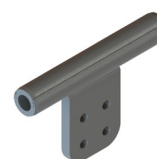
CPLK9514 SPLIT RUN TO 4-HOLE LONGITUDINAL PAD TEE

Up to
500kV

Pads
3" 7/4"

2" OD Weight
~5 lbs

Cu CCL9514 3" CPLK9513 SPLIT EHV



ORDERING EXAMPLE

CPLK9514D00040

3/0 Pigeon ACSR Split Run to 4", 4-Hole Longitudinal Pad Tee; Aluminum

CL994 U-SHAPED GROUND STIRRUP

2" OD Weight
~10 lbs

Cu COPPER SPLIT TIN PLATING



ORDERING EXAMPLE

CL994B07500-04500

750 MCM Bare Copper Split Run with 3/4" U-Shaped Ground Rod

Copper Cable Run*
Copper Rod Size
(04500=3/4")

CL995 V-SHAPED GROUND STIRRUP

2" OD Weight
~11 lbs

Cu COPPER SPLIT TIN PLATING



ORDERING EXAMPLE

CL995B15000-04500

1500 MCM Bare Copper Split Run with 3/4" V-Shaped Ground Rod

Copper Cable Run*
Copper Rod Size
(04500=3/4")

CL761 SPLIT RUN GROUND STIRRUP

2" OD Weight
~3 lbs

Cu CCL761 SPLIT



ORDERING EXAMPLE

CL761D22500

2250 Sagebrush AAC Split Run with Ground Stirrup; Aluminum

CL993 FLEX CABLE GROUND LOOP

2" OD Weight
~8 lbs

Cu COPPER SPLIT TIN PLATING



ORDERING EXAMPLE

CL993B00040-02500

4/0 AWG Bare Copper Split Run with 250 MCM Bare Copper Flex Loop

Copper Cable Run*
Ground Loop
Cable Size*

* See chart on page 30 for Copper Cable Connector Identifier Numbers

ROPELAY CABLE AND METRIC SIZES AVAILABLE



Ropelay Cable

Because DMC Power manufactures everything from scratch based on your requirements, it's impossible for us to list the tens of thousands of different connectors and configurations possible in this catalog. If you're looking for Metric sizes, Ropelay Cable or any other custom configuration, just call us at **888-SWAGE-NOW** and let our in-house Engineering department do the work for you!

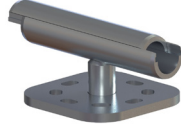
CL451**SPLIT RUN SINGLE CABLE SUPPORT**

Up to
345kV

2" OD Weight
~5 lbs

Cu CCL451 SPLIT

BOLT CIRCLES E1=3" E2=5" E3=7"

**ORDERING EXAMPLE****CL451D09000 E3** — Bolt Circle

795 Drake ACSR Split Run Cable Support with 7" Bolt Circle; Aluminum

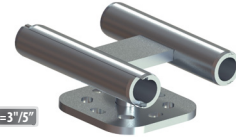
CL452**SPLIT RUN DUAL CABLE SUPPORT**

Up to
500kV

2" OD Weight
~7 lbs

Cu CCL452 SPLIT EHV

BOLT CIRCLES E1=3" E2=5" E3=7" E12=3"/5"

**ORDERING EXAMPLE****CL452D12720 E1** — Bolt Circle

1272 Narcissus AAC Split Run Dual Cable Support with 3" Bolt Circle; Aluminum

CL430**BUS TO CABLE TAP**

Up to
500kV

2" OD Weight
~3 lbs

Cu CCL430 CL431 ANGLES CAPPED EHV

**ORDERING EXAMPLE****CL430D48-07950** — Bus Run Size
Cable Tap Size

3" Bus Run to 795 Lilac AAC Tap; Aluminum

CL432**BUS TO DUAL CABLE TAPS**

Up to
500kV

2" OD Weight
~4 lbs

Cu CCL432 CL433 ANGLES CAPPED EHV

**ORDERING EXAMPLE****CL432D40-18000** — Bus Run Size
Cable Tap Size

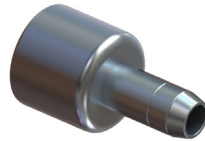
2-1/2" Bus Run to Dual 1590 Falcon ACSR Taps; Aluminum

CL400**BUS TO CABLE COUPLER**

Up to
500kV

2" OD Weight
~2 lbs

Cu CCL400 ANGLES EHV

**ORDERING EXAMPLE****CL400D32-11130** — Bus Run Size
Cable Tap Size

2" Bus Coupler to 1113 Marigold AAC Tap; Aluminum

CL404**BUS TO 45° CABLE COUPLER**

Up to
500kV

2" OD Weight
~2 lbs

Cu CCL404 ANGLES EHV

**ORDERING EXAMPLE****CL404D80-09000** — Bus Run Size
Cable Tap Size

5" Bus Coupler to 795 Drake ACSR 45° Tap; Aluminum

CL420**BUS TO DUAL IN-LINE CABLE TAPS**

Up to
500kV

2" OD Weight
~3 lbs

Cu CCL420 ANGLES EHV

**ORDERING EXAMPLE****CL420D80-25000** — Bus Run Size
Cable Tap Size

5" Bus Coupler to Dual 2500 Lupine AAC In-Line Taps; Aluminum

CL489**BUS TO TRIPLE SIDE FORMED CABLE TAPS**

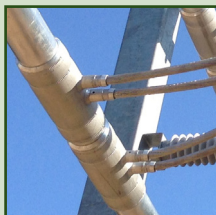
Up to
500kV

2" OD Weight
~4 lbs

Cu CCL489 ANGLES EHV

**ORDERING EXAMPLE****CL489D96-25000** — Bus Run Size
Cable Tap Size

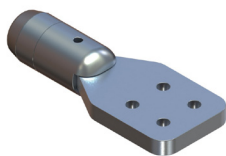
6" Bus to Three 2312 Thrasher ACSR Side Formed Taps; Aluminum

REDUCE BUS-TO-CABLE HOT SPOTS & MAINTENANCE

Why bolt pads together when you can have an all-in-one connection? Bolted connections require additional re-tightening, inspection and may lead to hot spots at the pad. Our CL style of Bus-to-Cable connectors are designed, machined and welded together to be a seamless connection between the two distinct styles. Any option you can think of is possible - go to **DMCPower.com** for a more complete listing.

CEHV9440EHV 4-HOLE CENTER
FORMED PAD TERMINALUp to
345kV 2" OD Weight
~2 lbs

ORDERING EXAMPLE

CEHV9440D127201272 Narcissus AAC Barrel to 4",
4-Hole Center Formed Pad; EHV**CEHV9442**EHV 4-HOLE OFFSET
PAD TERMINALUp to
500kV 2" OD Weight
~6 lbs

ORDERING EXAMPLE

CEHV9442D225002156 Bluebird ACSR Barrel to 4",
4-Hole Offset Pad; EHV**CEHV9444**EHV 4-HOLE 45° PAD
TERMINALUp to
500kV 2" OD Weight
~6 lbs

ORDERING EXAMPLE

CEHV9444D100001000 Hawkweed AAC Barrel to 4",
4-Hole 45° Pad; EHV**CEHV9642**EHV DUAL BARRELS TO 4-HOLE
CENTER FORMED PAD TERMINALUp to
500kV 2" OD Weight
~10 lbs

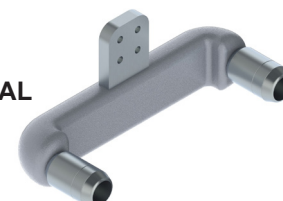
ORDERING EXAMPLE

CEHV9642D22500Dual 2250 Sagebrush AAC Barrels to
4", 4-Hole Center Formed Pad; EHV**CEHV9644**EHV DUAL BARRELS TO
4-HOLE 45° PAD TERMINALUp to
500kV 2" OD Weight
~11 lbs

ORDERING EXAMPLE

CEHV9644D22500Dual 2156 Bluebird ACSR Barrels to 4",
4-Hole 45° Pad; EHV**CEHV9649**EHV DUAL BARRELS TO
4-HOLE 90° PAD TERMINALUp to
500kV 2" OD Weight
~12 lbs

ORDERING EXAMPLE


CEHV9649D09540Dual 900 Ruddy ACSR Barrels to 4",
4-Hole 90° Pad; EHV

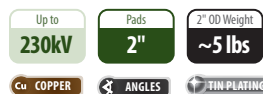
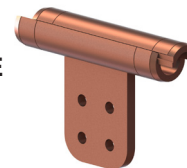
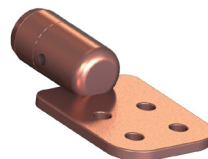
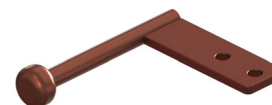
- Bolt shields and corona rings are available
- Check with factory on cable sizes, spacing and for special EHV applications

APPLICATION
NOTES**EXTRA HIGH VOLTAGE RATINGS**

Many of our Cable and Bus connectors have EHV equivalents rated up to 500kV and 765kV.

- **Tested Corona free**
- **Reduced power loss and radio noise**
- **Pre-drilled weep holes and high quality surface finish**
- **Designed-in shielding rings with generous mass & radii for high ampacity and voltage**

Look for this symbol  below the parts to know they are rated for certain EHV applications or let us design a custom EHV connector for your specific needs.

CCL9202**COPPER 2-HOLE OFFSET
PAD TERMINAL****ORDERING EXAMPLE****CCL9202B05000**500 MCM Bare Copper Barrel to 2",
2-Hole Offset Pad**CCL9514****COPPER SPLIT RUN TO 4-HOLE
LONGITUDINAL PAD TEE****ORDERING EXAMPLE****CCL9514B00040**4/0 AWG Bare Copper Split Run to 4",
4-Hole Longitudinal Pad Tee**CCL9442****COPPER 4-HOLE OFFSET
PAD TERMINAL****ORDERING EXAMPLE****CCL9442B20000**2000 MCM Bare Copper Barrel to 4",
4-Hole Offset Pad**CCL9642****COPPER DUAL BARRELS TO
4-HOLE OFFSET PAD TERMINAL****ORDERING EXAMPLE****CCL9642B10000**Dual 1000 MCM Bare Copper Barrels to 4",
4-Hole Offset Pad**CCL731****COPPER SPLIT
RUN TAP****ORDERING EXAMPLE****CCL731B07500-00040** Split Run Size
Tap Size750 MCM Bare Copper Split Run
to 4/0 AWG Bare Copper Tap**CCL1163****COPPER GROUND STUD
TO 2-HOLE PAD****ORDERING EXAMPLE****CCL1163B90 E3** Pad Angle
Pad Length3/4" Ground Stud to 2" Wide, 6" Long,
2-Hole 90° Pad


• Add "T" to the end of any part number for Tin Plating

PROTECT YOUR INVESTMENT WITH TIN PLATING

No matter if you're ordering a 6" aluminum bus expansion or a #6 gauge copper ground splice, DMC Power can plate it all - and fast. Our tin plating process:



- Dramatically reduces the effects of oxidization, especially in extreme weather environments
- Keeps conductivity high so more power is pushed through the smooth, clean surface
- Improves connector longevity
- Allows for the joining of two dissimilar metals
- Helps deter theft by eliminating visible copper

Our most popular tin plated items have this icon  next to them, but anything is possible. Insert a "T" at the end of the complete part number when ordering (ex: CPLK9442D04500T) and leave the rest up to us.

**CUSTOM
SOLUTIONS**

BUILDING THE PERFECT CONNECTOR

Our connectors are designed to fit the exact diameter of the cable being used. This precision ensures that the level of compression and contact between the cable, the connector and the inner strands of cable are at the highest possible value.

Selecting the properly sized connector and corresponding Swage Tooling couldn't be easier. Simply follow steps 1 & 2 in the chart below to find the 5-digit Connector Identifier Number used in our standard connector ordering nomenclature on page 30. Based on that number, step 3 will list which head assembly size is required to install that particular connector O.D.



Call our customer service team at **888-SWAGE-NOW** if you have questions about selecting your connector or for other cable types and sizes not listed.

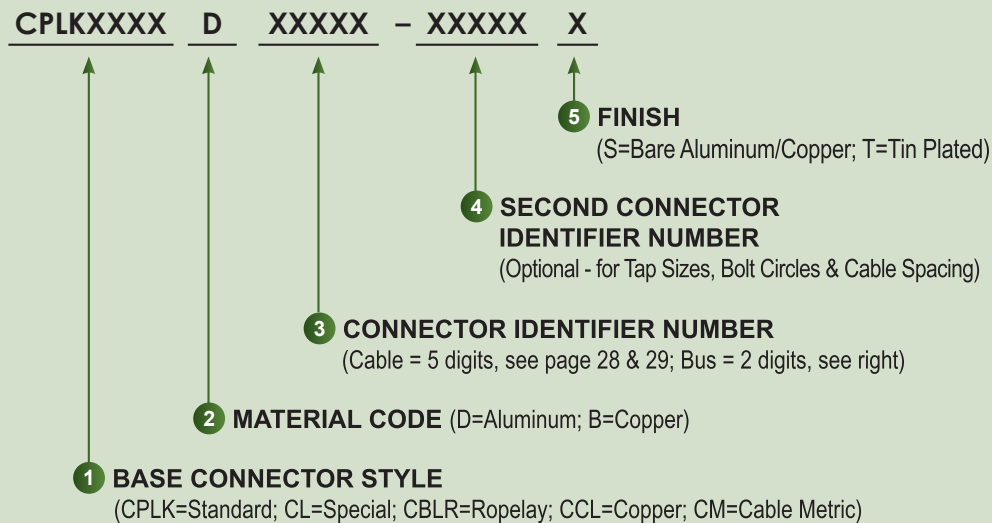
- 1 Find the AAC/ACSR conductor being used
- Use the corresponding Connector Identifier Number to fill out the part number, see page 30
- 2
- 3 Note the Head Assembly size based on the Connector Identifier Number

AAC CONDUCTOR			ACSR CONDUCTOR			Connector Identifier Number	CONNECTOR	
SIZE (kcmil)	STR (Al/St)	CODE WORD	SIZE (kcmil)	STR (# Wires)	CODE WORD		HEAD ASSEMBLY*	O.D.
#6	7/w	Peachbell	#6	6/1	Turkey	00006	DLT45CLHA00004	0.500
#4	7/w	Rose	#5	6/1	Thrush	00004		
#2	7/w	Iris	#4	6/1	Swan	00002	DLT45CLHA00010	0.750
#1	7/w	Pansey		7/1	Swanate			
			#2	6/1	Sparrow	00001		
				7/1	Sparate			
1/0	7/w	Poppy	#1	6/1	Robin	00010	DLT45CLHA02500	1.000
2/0	7/w	Aster	1/0	6/1	Raven	00020		
3/0	7/w	Phlox	2/0	6/1	Quail	00030		
4/0	7/w	Oxlip	3/0	6/1	Pigeon	00040		
250.0	7/w	Sneezewort	4/0	6/1	Penguin	02500	DLT45CLHA03975	1.250
	7/w	Valerian						
266.8	7/w	Daisy	266.8	18/1	Waxwing	02668		
	19/w	Laurel		26/7	Partridge	03000		
300.0	19/w	Peony	300.0	26/7	Ostrich	03500		
336.4	19/w	Tulip		18/1	Merlin			
350.0	19/w	Daffodil	336.4	26/7	Linnet	03975		
397.5	19/w	Canna		30/7	Oriole			
			397.5	18/1	Chickadee			
450.0	19/w	Goldentuft	397.5	24/7	Brant	04500	DLT45CLHA05565	1.500
				26/7	Ibis			
477.0	19/w	Cosmos		30/7	Lark	04770		
	37/w	Syringa						
500.0	19/w	Zinnia	477.0	18/1	Pelican	05000		
	37/w	Hyacinth		24/7	Flicker	05565		
556.5	19/w	Dahlia		26/7	Hawk			
	37/w	Mistletoe						

AAC CONDUCTOR			ACSR CONDUCTOR			Connector Identifier Number	CONNECTOR			
SIZE (kcmil)	STR (Al/St)	CODE WORD	SIZE (kcmil)	STR (# Wires)	CODE WORD		HEAD ASSEMBLY*	O.D.		
600.0	37/w	Meadowsweet	477.0	30/7	Hen	06000	DLT45CLHA07155	1.750		
636.0	37/w	Orchid	556.5	18/1	Osprey	06360				
700.0	37/w	Verbena		24/7	Parakeet					
				26/7	Dove					
			30/7	Eagle						
	61/w	Flag	636.0	18/1	Kingbird	07000				
				36/1	Swift					
715.5	37/w	Violet	605.0	24/7	Peacock	07155				
	61/w	Nasturtium			26/7				Squab	
750.0	37/w	Petunia	605.0	30/7	WoodDuck	07500	DLT45CLHA08745	1.875		
	61/w	Cattail	636.0	30/19	Teal					
				24/7	Rook					
795.0	37/w	Arbutus		26/7	Grosbeak	07950				
				30/7	Scoter					
				30/19	Egret					
			24/7	Flamingo						
			26/7	Gannet						
			24/7	Stilt						
			54/7	Crow						
874.5	37/w	Anemone	795.0	36/1	Coot	08745				
	61/w	Crocus	45/7	Tern						
					26/7				Starling	
900.0	37/w	Cockscomb	795.0	30/19	Redwing	09000			DLT45CLHA11130	2.000
	61/w	Snapdragon		24/7	Cuckoo					
				54/7	Condor					
954.0	37/w	Magnolia	900.0	26/7	Drake	09540				
	61/w	Goldenrod		30/19	Mallard					
1000.0	37/w	Hawkweed		45/7	Ruddy	10000				
	61/w	Camellia	54/7	Canary						
			54/7	Crane						
1033.5	37/w	Bluebell	954.0	45/7	Rail	10335				
61/w	Larkspur	54/7		Cardinal						
1113.0	61/w	Marigold	1033.5	45/7	Ortolan	11130				
			54/7	Curlew						
1192.5	61/w	Hawthorn	1113.0	45/7	Bluejay	11925	DLT45CLHA15900	2.250		
1272.0	61/w	Narcissus	1192.5	54/19	Finch	12720				
1351.5	61/w	Columbine		45/7	Bunting	13515				
			54/19	Grackle						
1431.0	61/w	Carnation	45/7	Bittern	14310					
			54/19	Pheasant						
1510.5	61/w	Gladiolus	45/7	Dipper	15105					
			54/19	Martin						
1590.0	61/w	Coreopsis	45/7	Bobolink	15900					
			54/19	Plover						
1750.0	61/w	Jessamine	1510.5	45/7	Nuthatch	17500				
			54/19	Parrot						
			45/7	Lapwing						
			1590.0	45/7	Lapwing	18000				
				54/19	Falcon	18000				
2000.0	91/w	Cowslip	1780.0	84/19	Chukar	20000	DLT58CLHA25000*	2.750		
2250.0	91/w	Sagebrush	2156.0	84/19	Bluebird	22500				
			2167.0	72/7	Kiwi					
2303.5	91/w					23000				
2500.0	91/w	Lupine	2312.0	76/19	Thrasher	25000	DLT58CLHA40000*	3.250		
3000.0	127/w	Trillium				30000				
3500.0	127/w	Bluebonnet				35000				
4326.9	127/w	Nightshade				43269				

*DLT58- Heads Assemblies use the **DLT58MAPW0000** Power Unit; DLT45- Head Assemblies use the **DLT45MAPW0000** Power Unit

CABLE CONNECTOR ORDERING NOMENCLATURE



BUS SIZES		
DMC SIZE	PIPE SIZE	FITTING O.D.
12	3/4"	2.000
16	1"	2.000
20	1-1/4"	2.500
24	1-1/2"	2.500
32	2"	3.000
40	2-1/2"	3.750
48	3"	4.375
56	3-1/2"	5.000
64	4"	5.500
80	5"	6.500
96	6"	8.000

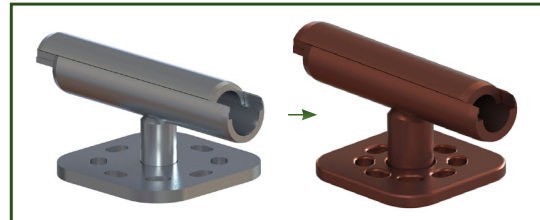
STANDARD EXAMPLE:			
CPLK9209	D	00006	S
↑ 2-Hole 90° Terminal	↑ #6 Peachbell AAC Cable	↑ Bare Aluminum	

BUS TO CABLE EXAMPLE:				
CL400	D	64	- 11130	T
↑ Bus to Cable Coupler	↑ 4" Bus Run	↑ 1033.5 Curlew ACSR Cable	↑ Tin Plated	

COPPER CABLE EXAMPLE:			
CCL9442	B	04500	T
↑ Copper 4-Hole Offset Terminal	↑ 450/AWG Copper Cable	↑ Tin Plated	

COPPER CABLE SIZE SELECTION CHART

- The Connector Identifier Numbers listed below should only be used with copper cable conductors
- Every aluminum connector can be designed into a copper equivalent, contact DMC Power for details



BARE COPPER CONDUCTOR CONCENTRIC LAY STRANDED		Connector Identifier Number
SIZE (AWG / kcmil)	STR	
1/0	19	00010
2/0	19	00020
3/0	19 & 37	00030
4/0	19	00040
250	19 & 37	02500
300	37	03000
350	37	03500
400	37	04000
450	19	04500
500	37 & 61	05000

BARE COPPER CONDUCTOR CONCENTRIC LAY STRANDED		Connector Identifier Number
SIZE (AWG / kcmil)	STR	
600	61	06000
650	37	06500
700	61	07000
750	61 & 91	07500
800	61	08000
900	37	09000
1000	61 & 91	10000
1250	91 & 127	12500
1500	91 & 127	15000
1750	61 & 127	17500
2000	127 & 169	20000

IF YOU NEED IT, WE CAN BUILD IT.



- Custom designed fittings for any size job
- Quick turn-around time

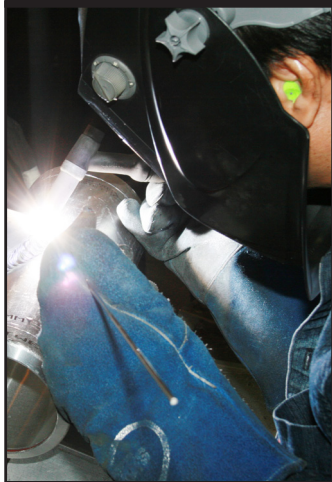
- Low minimum order quantity
- Worldwide shipping

Our in-house engineering, test lab and manufacturing facilities allow DMC Power to move fast and deliver quick turn jobs before most companies will even give you a response. Our flexibility and ability to make any part, of any size and any dimension is an advantage you simply won't find anywhere else.

TESTING



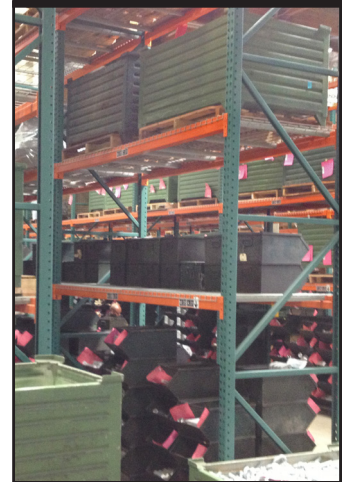
WELDING



MACHINING



WAREHOUSING



THESE ARE JUST A FEW OF THE CUSTOM CONNECTORS WE'VE BUILT FOR OUR CUSTOMERS:

Adjustable
Terminal Elbow



Triple Cable to
4-Hole Pad



Flat Cable Coupler



Ground Jumper
Assembly



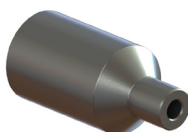
Split Cable Run
to Bus Tap



Dual Size
Barrel Tap



Internal Vibration
Dampener



Split Tee Run to
22.5° Tap



Dual Pad
Terminal



Bus Support Tee

